



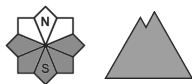
## Danger Level 1 - Low



**Tendency: Decreasing avalanche danger**  
on Friday 04 02 2022



Wet snow



### Moist snow slides during the day are still possible.

As a consequence of rain up to high altitudes the snow drift accumulations stabilised. As a consequence of falling temperatures and low relative humidity a crust formed on the surface during the night. Very steep sunny slopes: As the day progresses individual small and, in isolated cases, medium-sized moist snow slides and avalanches are possible.

### Snowpack

Up to high altitudes rain fell on Monday over a wide area. Sunny slopes: The surface of the snowpack will freeze to form a strong crust and will soften during the day. Shady slopes: In many places there is a danger of falling on the hard snow surface.

Above approximately 2000 m there are 100 to 200 cm of snow, and even more in some localities. Snow depths vary greatly at elevated altitudes, depending on the influence of the wind.

### Tendency

Friday: Gradual decrease in danger of moist avalanches as the temperature drops.