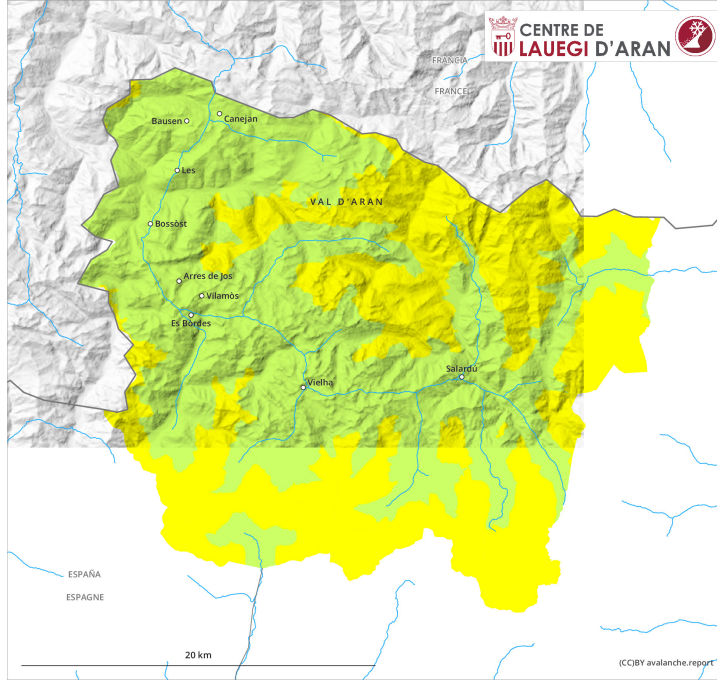
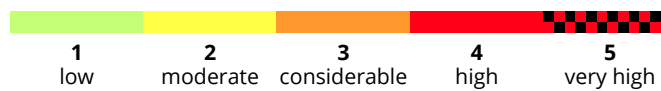
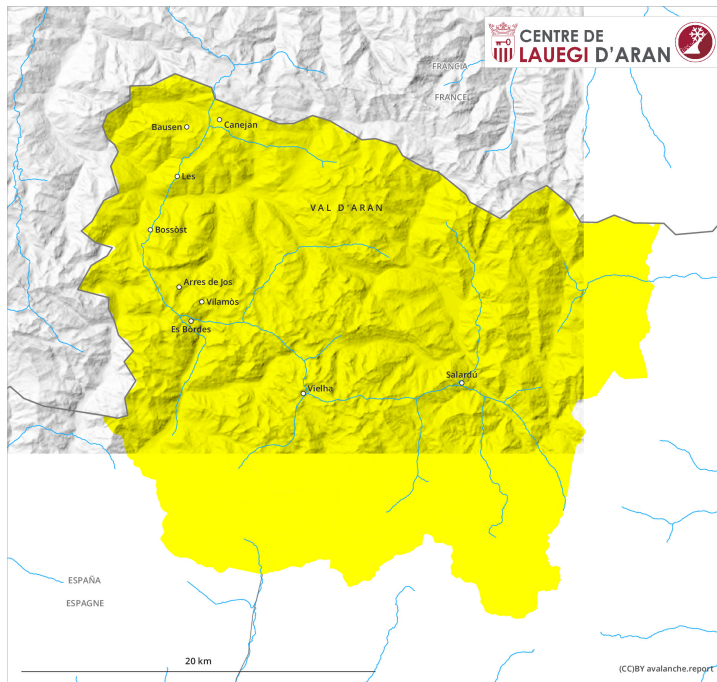


**AM**

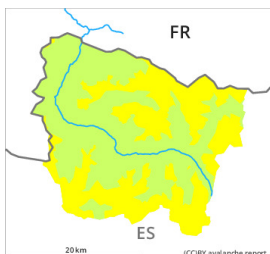


**PM**

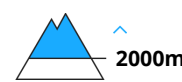


## Danger Level 2 - Moderate

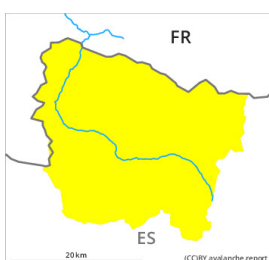
**AM:**



**Tendency: Constant avalanche danger** →  
on Saturday 05 03 2022



**PM:**



**Tendency: Constant avalanche danger** →  
on Saturday 05 03 2022



From the early morning as a consequence of new snow and wind there will be a rapid increase in the danger of dry avalanches to level 2 (moderate).

The fresh snow as well as the wind slabs that are forming adjacent to ridgelines and in gullies and bowls represent the main danger.

The new snow can be released easily, or, in isolated cases, naturally in all aspects above approximately 2000 m. The avalanches in these locations are only small but in many cases easily released.

In particular on north, east and south facing slopes avalanche prone wind slabs will form. In isolated cases they are medium-sized but can be released easily by a single winter sport participant. At the border to Ribagorça and Pallars and at high altitude the avalanche prone locations are more prevalent and the danger is greater.

Backcountry touring and other off-piste activities call for experience in the assessment of avalanche danger.

### Snowpack

Over a wide area over a wide area 10 cm of snow, and even more in some localities, will fall until late in the night above approximately 1800 m. The wind will be moderate to strong in particular on the peaks and ridges of the divide with the Ribagorçana basin and the Pallaresa basin. The fresh snow as well as the wind slabs that are being formed by the northwesterly wind will become increasingly prone to triggering. They are lying on unfavourable layers in particular on little used shady slopes and at intermediate and high altitudes.

### Tendency

Gradual decrease in danger of dry avalanches as a consequence of the ceasing of precipitation. Significant increase in danger of moist snow slides as a consequence of warming during the day and solar radiation.