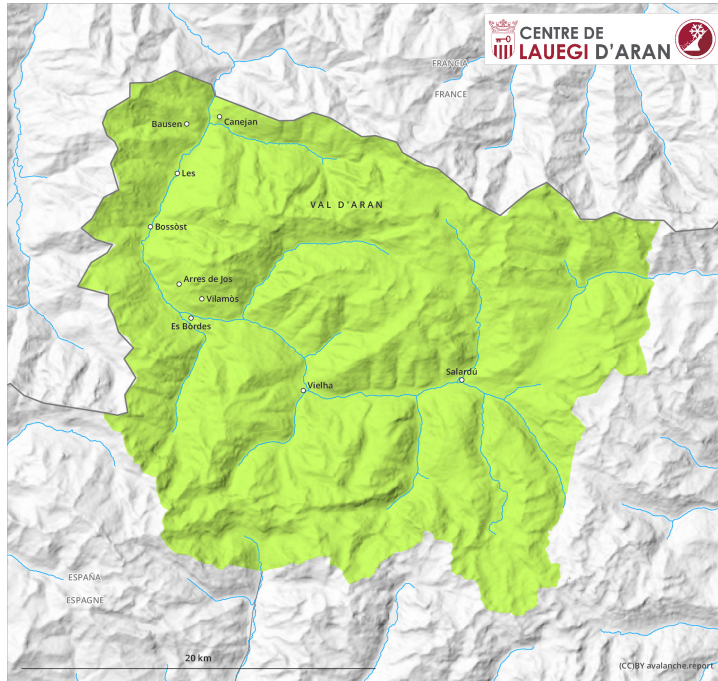
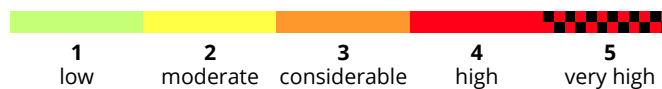
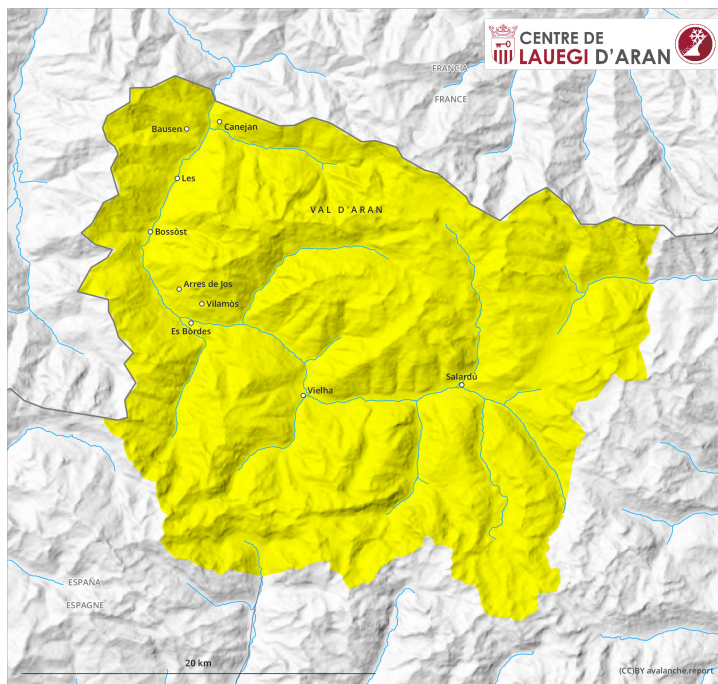


AM



PM



Danger Level 2 - Moderate

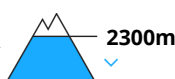
AM:



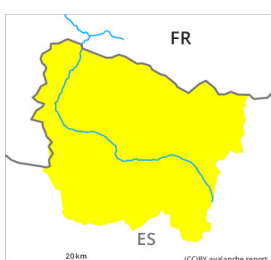
Tendency: Increasing avalanche danger
on Wednesday 13 04 2022



Wet snow



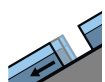
PM:



Tendency: Increasing avalanche danger
on Wednesday 13 04 2022



Wet snow



Gliding snow



Wet and gliding snow require caution.

The early morning will see favourable avalanche conditions mostly. From the middle of the day more frequent small and, in isolated cases, medium-sized moist snow slides and avalanches are to be expected in all altitude zones. In addition towards the evening on north facing slopes, individual medium-sized and, in isolated cases, large moist slab avalanches are to be expected. In addition a substantial danger of gliding avalanches exists.

High Alpine regions: Weak layers in the old snowpack can be released in very isolated cases by people also on very steep shady slopes. Sometimes they are medium-sized.

Backcountry tours and off-piste skiing should be concluded early.

Snowpack

The conditions are spring-like.

The surface of the snowpack will freeze to form a strong crust and will soften during the day. The rain will give rise in the afternoon to a loss of strength within the snowpack in particular on very steep shady slopes below approximately 2400 m.

Tendency

Wednesday: Up to high altitudes rain will fall. Further increase in danger of moist avalanches as the

penetration by moisture increases. In addition sometimes avalanche prone wind slabs will form above approximately 2400 m.