

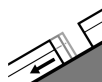


Danger Level 2 - Moderate

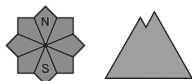


Tendency: Increasing avalanche danger

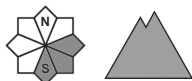
on Wednesday 13 04 2022



Gliding snow



Wet snow



Wet and gliding snow require caution.

As a consequence of the rain more moist and wet avalanches are to be expected at any time, in particular medium-sized ones. In addition as the day progresses on north facing slopes, individual medium-sized and, in isolated cases, large moist slab avalanches are to be expected. In addition a substantial danger of gliding avalanches exists. This applies in particular on very steep grassy slopes in all altitude zones, and in all aspects. In isolated cases they are large.

High Alpine regions: Weak layers in the old snowpack can be released in very isolated cases by people also on very steep shady slopes.

Backcountry touring calls for careful route selection. The avalanche danger is within the uppermost range of danger level 2 (moderate).

Snowpack

The conditions are spring-like.

The surface of the snowpack is hardly frozen at all and will soften quickly. The rain will give rise in the afternoon to a loss of strength within the snowpack in particular on very steep shady slopes below approximately 2400 m.

Tendency

Wednesday: Up to high altitudes rain will fall. Further increase in danger of moist avalanches as the penetration by moisture increases. In addition sometimes avalanche prone wind slabs will form above approximately 2400 m.