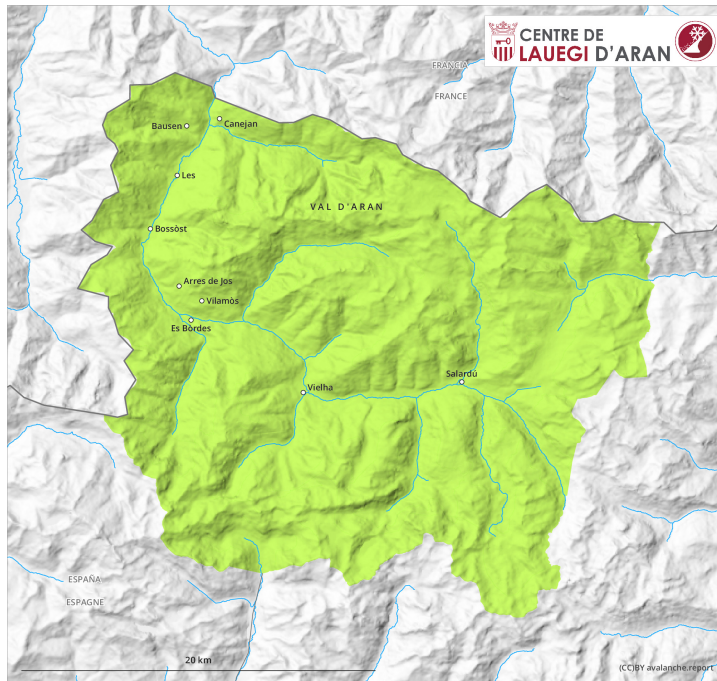
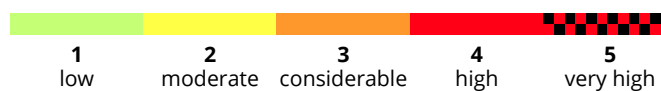
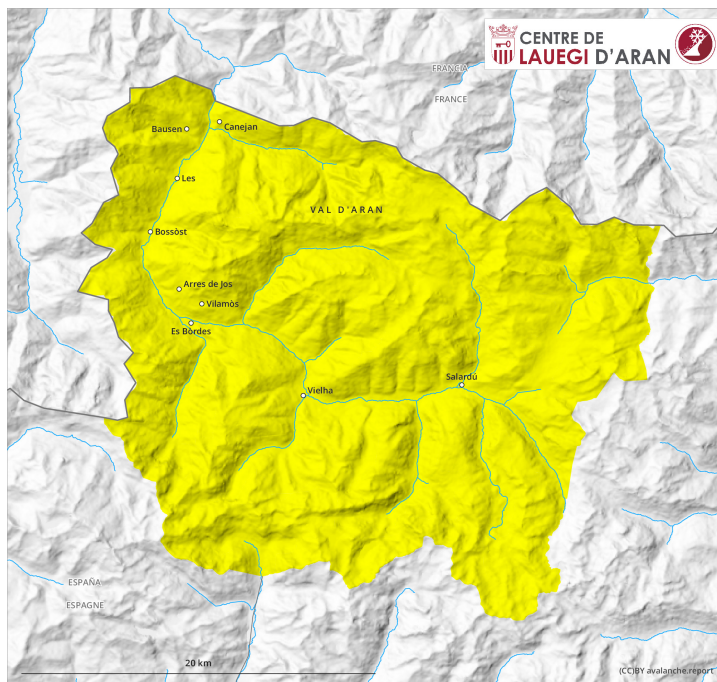


AM



PM



Danger Level 2 - Moderate

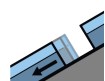
AM:



Tendency: Decreasing avalanche danger
on Monday 18 04 2022



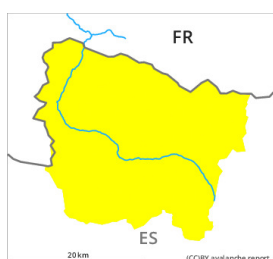
Wet snow



Gliding snow



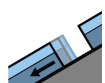
PM:



Tendency: Decreasing avalanche danger
on Monday 18 04 2022



Wet snow



Gliding snow



Wet and gliding snow represent the main danger.

As a consequence of warming during the day and solar radiation more wet and gliding avalanches are possible from midday.

The avalanche prone locations for gliding avalanches are to be found on very steep east, south and west facing slopes in all altitude zones and on shady slopes below approximately 2400 m. In very isolated cases the avalanches in these locations are large.

In addition from midday in all aspects, numerous small and, in isolated cases, medium-sized wet snow slides and avalanches are to be expected. Moist avalanches can be released by people or triggered naturally.

Snowpack

The conditions are spring-like.

The surface of the snowpack is frozen, but not to a significant depth and will soften later than the day before.

The meteorological conditions caused a substantial weakening of the snowpack in all aspects. Naturally triggered avalanches confirm a dangerous avalanche situation on very steep slopes.

Tendency

Gradual decrease in danger of wet and gliding avalanches as the temperature drops.