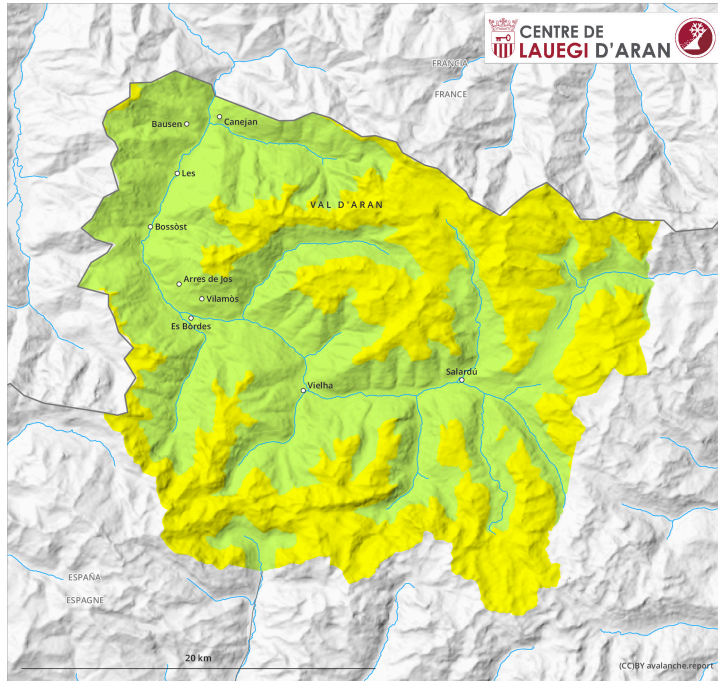
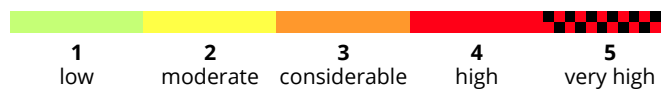
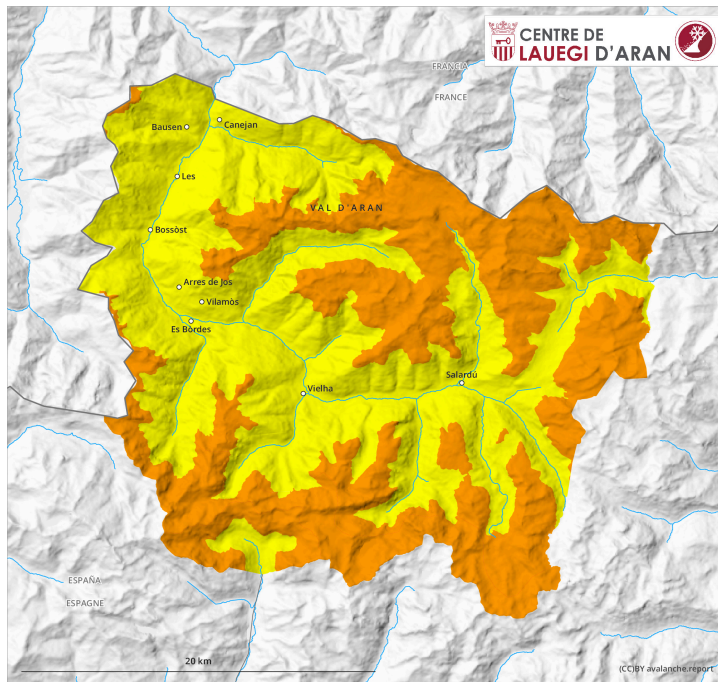


AM

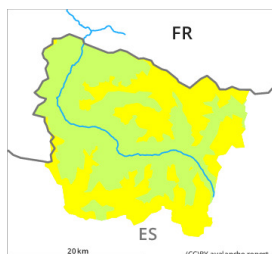


PM



Danger Level 3 - Considerable

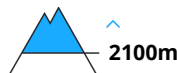
AM:



Tendency: Decreasing avalanche danger
on Monday 03 04 2023



Wind slab



Snowpack stability: **poor**

Frequency: **some**

Avalanche size: **medium**



New snow

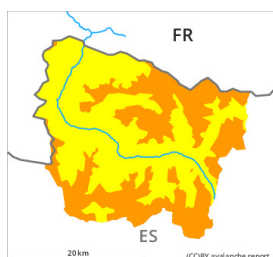


Snowpack stability: **poor**

Frequency: **few**

Avalanche size: **small**

PM:



Tendency: Decreasing avalanche danger
on Monday 03 04 2023



Wind slab



Snowpack stability: **very poor**

Frequency: **some**

Avalanche size: **medium**



New snow



Snowpack stability: **poor**

Frequency: **some**

Avalanche size: **small**

New snow and wind slabs require caution. In the course of the day probably danger level 3 (considerable) will be reached above approximately 2100 m.

As a consequence of new snow and a strong wind from northwesterly directions, wind slabs will form during the course of the night on northeast, east and south facing slopes. They will be deposited on a crust in particular on shady slopes. New snow and wind slabs can in many places be released very easily and reach medium size.

The peak of avalanche activity is expected from the middle of the day.

The avalanche prone locations are numerous and are barely recognisable because of the poor visibility.

The conditions are treacherous for ski touring, freeriding and snowshoe hiking in steep terrain.

Snowpack

30 cm of snow, and up to 40 cm in some localities, will fall until the evening above approximately 1500 m. The strong wind will transport the new snow significantly.

Below approximately 2100 m no snow is lying. On shady slopes at high altitude there are 10 to 30 cm of snow, and even more in some localities.

Tendency

Monday: Gradual decrease in danger of dry avalanches as the snowfall eases. Rapid increase in danger of moist avalanches as a consequence of solar radiation.