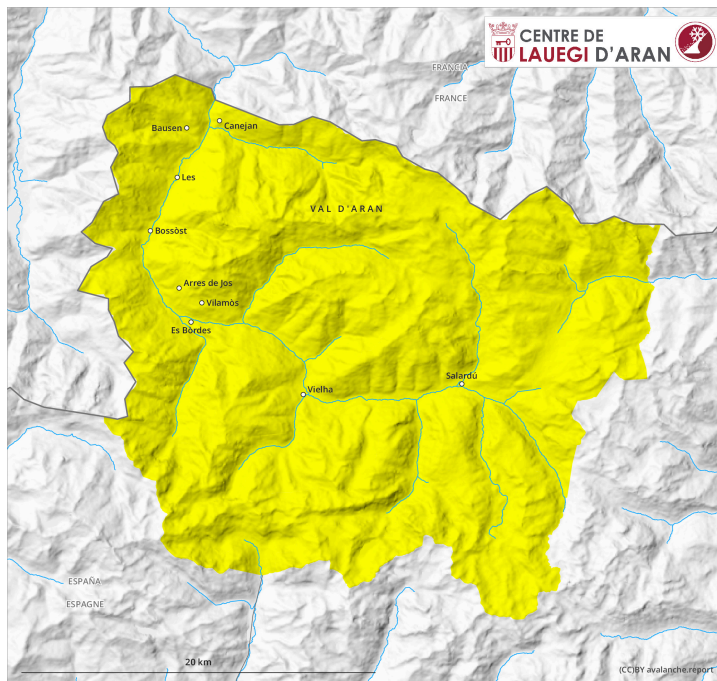
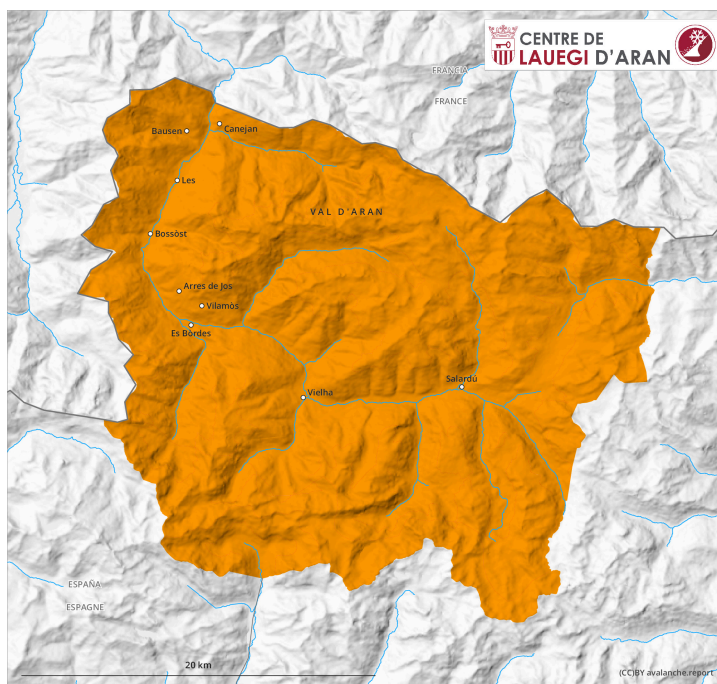


# AM

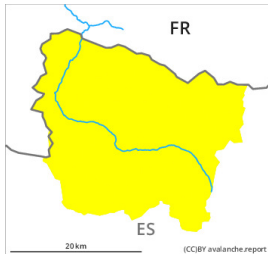


# PM



## Danger Level 3 - Considerable

**AM:**



**Tendency: Decreasing avalanche danger**

on Friday 24 11 2023



Wind slab

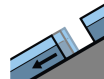


2000m

Snowpack stability: **poor**

Frequency: **some**

Avalanche size: **medium**



Gliding snow

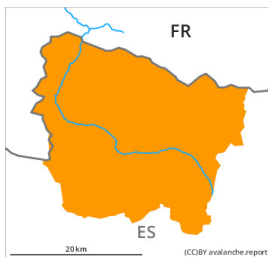


Snowpack stability: **very poor**

Frequency: **few**

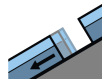
Avalanche size: **medium**

**PM:**



**Tendency: Decreasing avalanche danger**

on Friday 24 11 2023



Gliding snow



Snowpack stability: **very poor**

Frequency: **some**

Avalanche size: **medium**



Wet snow



Snowpack stability: **very poor**

Frequency: **many**

Avalanche size: **small**



Wind slab



2000m

Snowpack stability: **fair**

Frequency: **some**

Avalanche size: **medium**

As the day progresses as a consequence of warming during the day there will be a gradual increase in the danger of gliding avalanches and moist snow slides to level 3 (considerable).

The wind slabs must be evaluated with care and prudence above approximately 2000 m. These can in some places be released, even by a single winter sport participant and reach medium size.

As a consequence of warming during the day and the solar radiation, the likelihood of gliding avalanches and moist snow slides being released will increase appreciably in all altitude zones. In many cases the avalanches in these locations are medium-sized. The avalanche prone locations are to be found in particular on very steep grassy slopes. In isolated cases, the gliding avalanches can reach areas without any snow cover in steep gullies.

The Avalanche Warning Service currently has only a small amount of information about the snowpack, so that the avalanche danger should be investigated especially thoroughly in the relevant locality.

## Snowpack

Up to 40 cm of snow fell in the last two days above approximately 1700 m. The northerly wind has transported the new snow significantly. Snow depths vary greatly at intermediate and high altitudes, depending on the influence of the wind.

Sunshine and high temperatures will give rise as the day progresses to significant moistening of the snowpack in particular on very steep sunny slopes in all altitude zones.

## Tendency

As a consequence of sharply falling temperatures the snowpack will consolidate on Friday. Significant decrease in danger of gliding avalanches and moist snow slides.