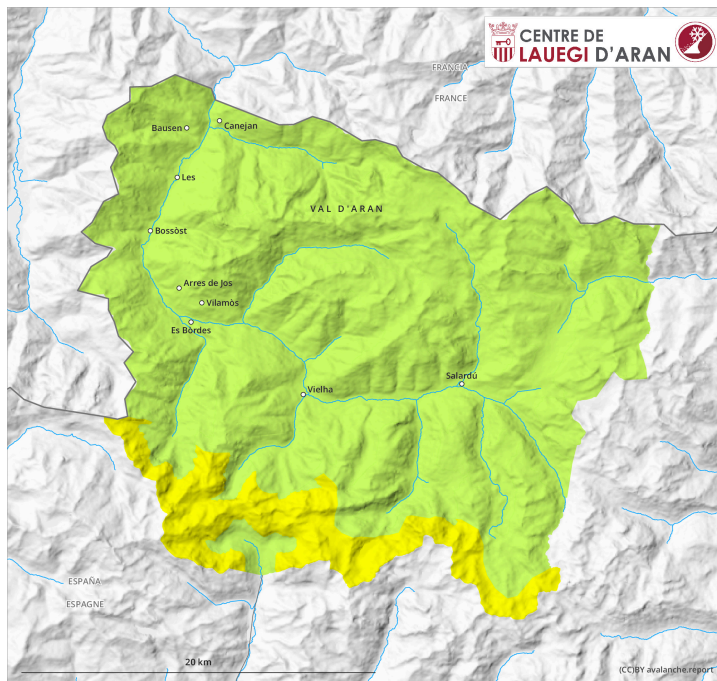


# AM

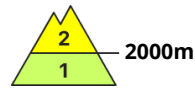
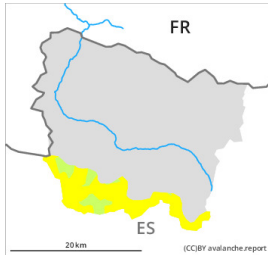


# PM



## Danger Level 2 - Moderate

**AM:**



**Tendency: Increasing avalanche danger**  
on Sunday 11 02 2024



Wind slab

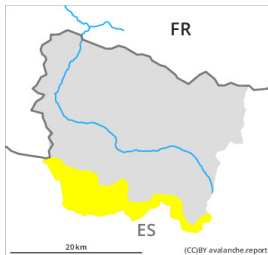


Snowpack stability: **very poor**

Frequency: **some**

Avalanche size: **small**

**PM:**



**Tendency: Increasing avalanche danger**  
on Sunday 11 02 2024



Wind slab



Snowpack stability: **very poor**

Frequency: **some**

Avalanche size: **small**

### Fresh wind slabs require caution.

During the course of the night mostly small wind slabs will form in particular on north and east facing slopes. In addition further wind slabs will form on south and east facing slopes as the day progresses. They can be released easily, or in isolated cases naturally. Individual medium-sized avalanches are further possible.

The wind slabs are to be bypassed in steep terrain. Apart from the danger of being buried, restraint should be exercised in view of the danger of avalanches sweeping people along and giving rise to falls.

### Snowpack

20 to 30 cm of snow will fall until late in the night above approximately 1500 m. From early morning the wind will be moderate to strong adjacent to ridgelines in particular at the southern border of Aran. The wind slabs will be deposited on the unfavourable surface of an old snowpack in particular on shady slopes.

### Tendency

Sunday: Down to 1200 m snow will fall over a wide area. For this reason the danger of dry avalanches will increase during the day.

## Danger Level 2 - Moderate

**AM:**



**Tendency: Increasing avalanche danger**   
on Sunday 11 02 2024



Wind slab



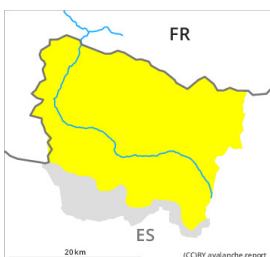
2000m

Snowpack stability: **poor**

Frequency: **few**

Avalanche size: **small**

**PM:**



**Tendency: Increasing avalanche danger**   
on Sunday 11 02 2024



Wind slab



Snowpack stability: **very poor**

Frequency: **some**

Avalanche size: **small**

### Fresh wind slabs require caution.

In the course of the day mostly small wind slabs will form in particular on south and east facing slopes. They can be released easily. or in isolated cases naturally,. Individual medium-sized avalanches are further possible.

The wind slabs are to be bypassed in steep terrain. Apart from the danger of being buried, restraint should be exercised in view of the danger of avalanches sweeping people along and giving rise to falls.

### Snowpack

20 to 30 cm of snow will fall until late in the night above approximately 1500 m. From early morning the wind will be moderate to strong adjacent to ridgelines in particular at the southern border of Aran. The wind slabs will be deposited on the unfavourable surface of an old snowpack in particular on shady slopes.

### Tendency

Saturday: Down to 1200 m snow will fall over a wide area. For this reason the danger of dry avalanches will increase during the day.