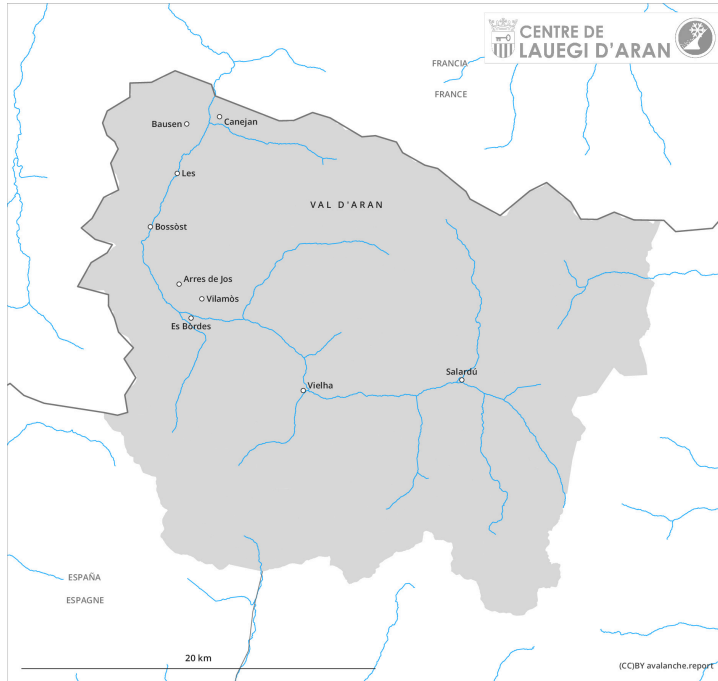
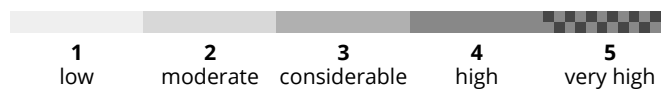
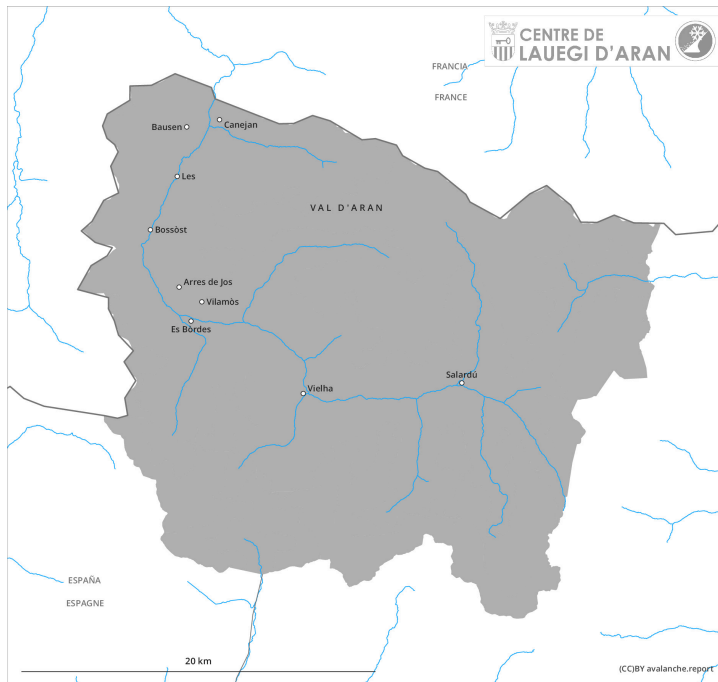


AM



PM

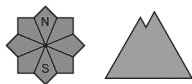


Danger Level 3 - Considerable

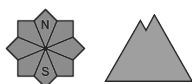
AM:



Tendency: Constant avalanche danger →
on Thursday 21 03 2024



Snowpack stability: **very poor**
Frequency: **few**
Avalanche size: **medium**

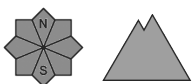


Snowpack stability: **very poor**
Frequency: **few**
Avalanche size: **medium**

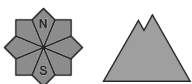
PM:



Tendency: Constant avalanche danger →
on Thursday 21 03 2024



Snowpack stability: **very poor**
Frequency: **some**
Avalanche size: **medium**



Snowpack stability: **very poor**
Frequency: **some**
Avalanche size: **medium**

Wet and gliding snow require caution.

As the penetration by moisture increases more wet and gliding avalanches are possible at any time, even large ones. The avalanche prone locations are to be found on sunny slopes in all altitude zones and on shady slopes below approximately 2500 m. From midday in all aspects there will be a gradual increase in the avalanche danger to level 3 (considerable).

Backcountry tours should be started and concluded early.

Snowpack

Outgoing longwave radiation during the night will be severely restricted. The surface of the snowpack will freeze very little and will soften quickly. Moisture can reach the persistent weak layers buried within the snowpack and reactivate them.

Above approximately 2000 m there are 70 to 120 cm of snow, and even more in some localities. At high altitude snow depths vary greatly, depending on the influence of the wind.

Tendency

Thursday: The danger of wet and gliding avalanches will not decrease for the time being.