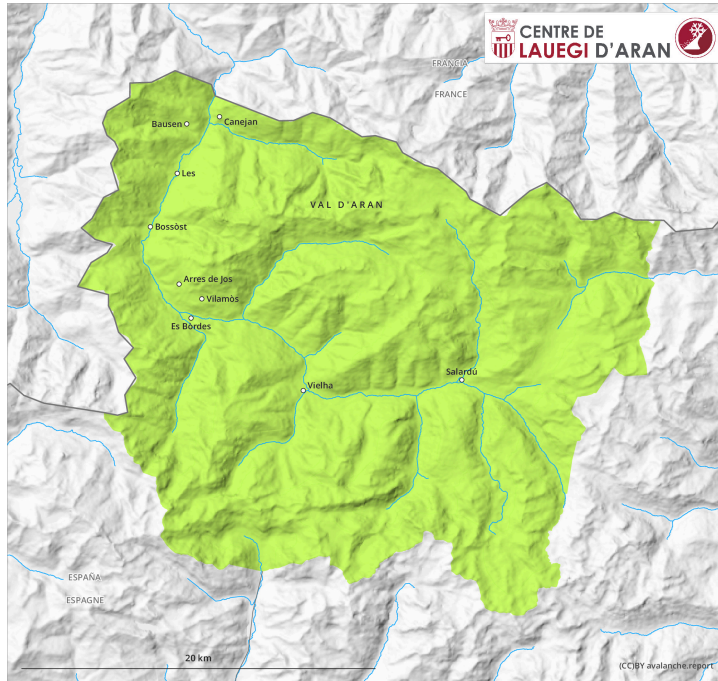
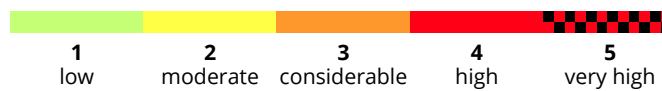
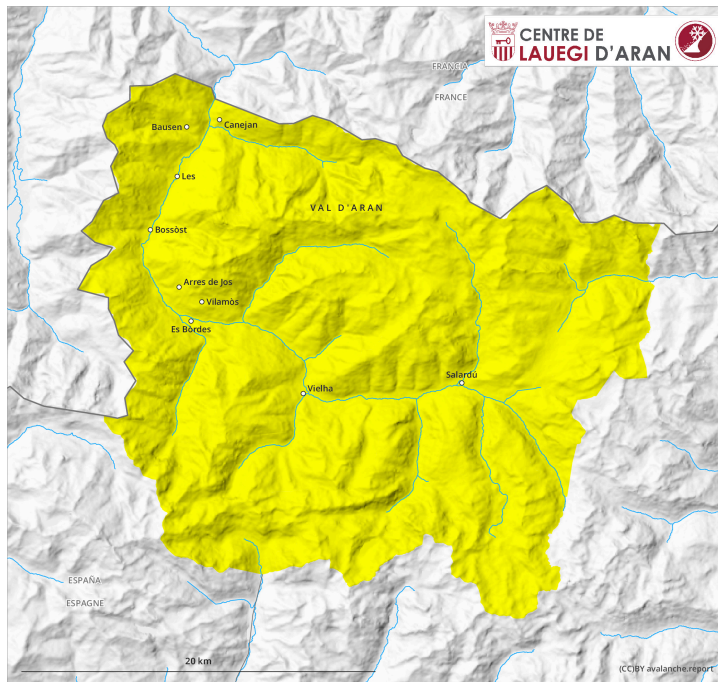


**AM**

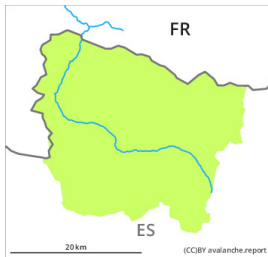


**PM**



## Danger Level 2 - Moderate

**AM:**



**Tendency: Increasing avalanche danger**  
on Tuesday 26 03 2024



Wet snow



Snowpack stability: **very poor**

Frequency: **few**

Avalanche size: **small**

**PM:**



**Tendency: Increasing avalanche danger**  
on Tuesday 26 03 2024



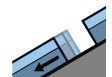
Wet snow



Snowpack stability: **very poor**

Frequency: **few**

Avalanche size: **medium**



Gliding snow



Snowpack stability: **very poor**

Frequency: **few**

Avalanche size: **medium**

Moist and wet avalanches and gliding avalanches are still possible during the day.

The early morning will see favourable avalanche conditions generally. As the penetration by moisture increases more wet and gliding avalanches are possible as the day progresses. The avalanches can release the entire snowpack and reach medium size in some cases. The avalanche prone locations are to be found on very steep sunny slopes in all altitude zones and on very steep shady slopes below approximately 2200 m.

### Snowpack

Outgoing longwave radiation during the night will be good. The surface of the snowpack will freeze to form a strong crust and will soften earlier than the day before. Up to intermediate altitudes rain will fall in the afternoon.

### Tendency

Tuesday: Rapid increase in danger of dry avalanches as a consequence of new snow and wind.