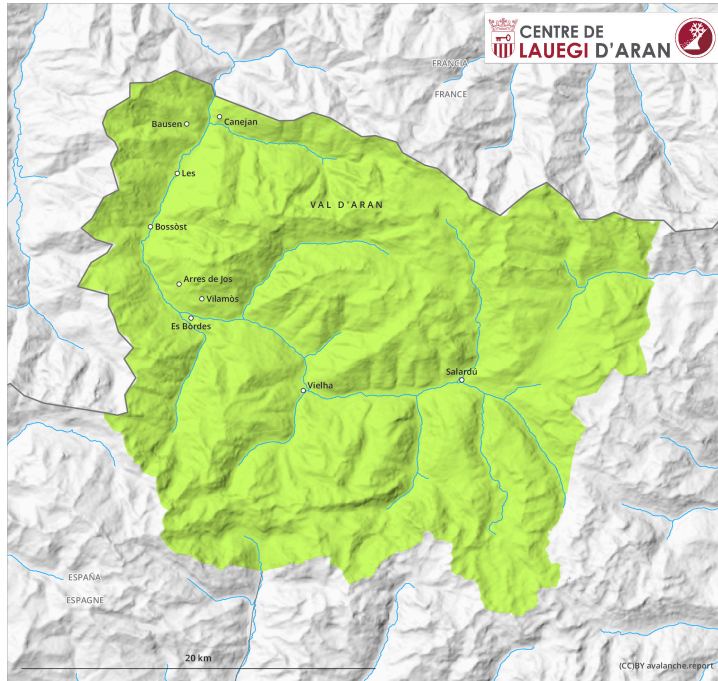
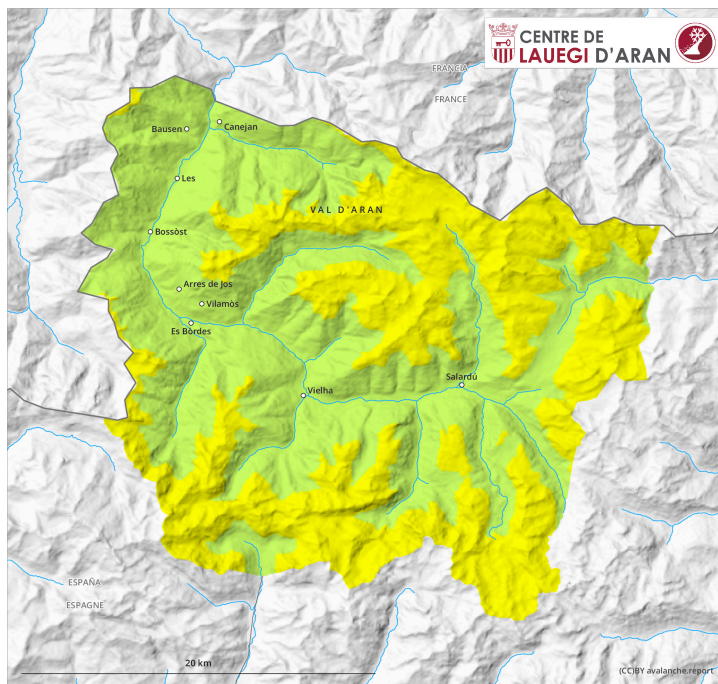


# AM



# PM



## Danger Level 2 - Moderate

**AM:**



**Tendency: Decreasing avalanche danger**

on Friday 12 04 2024



Wind slab



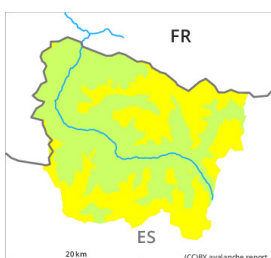
2000m

Snowpack stability: **poor**

Frequency: **few**

Avalanche size: **small**

**PM:**



2000m

**Tendency: Decreasing avalanche danger**

on Friday 12 04 2024



Wet snow



2000m

Snowpack stability: **very poor**

Frequency: **some**

Avalanche size: **small**



Wind slab



2000m

Snowpack stability: **poor**

Frequency: **few**

Avalanche size: **small**

Moist loose snow avalanches are likely to occur from the middle of the day. Wind slabs at elevated altitudes.

As the day progresses as a consequence of warming during the day and solar radiation there will be a gradual increase in the danger of moist avalanches to level 2 (moderate). In particular on very steep sunny slopes numerous small moist loose snow avalanches are to be expected above approximately 2000 m. In addition the clearly visible wind slabs of yesterday are prone to triggering in some cases. These can in some places be released by people, but they will be small in most cases. The avalanche prone locations are to be found in particular on shady slopes above approximately 2000 m.

Restraint should be exercised because avalanches can sweep people along and give rise to falls.

### Snowpack

5 to 10 cm of snow has fallen since Monday above approximately 2000 m. The moderate wind has transported the new snow significantly. The wind slabs are located on a brown crust due to the effect of Saharan dust.

### Tendency

Thursday: The danger of moist and wet avalanches will not decrease for the time being. The danger of dry slab avalanches will decrease gradually.