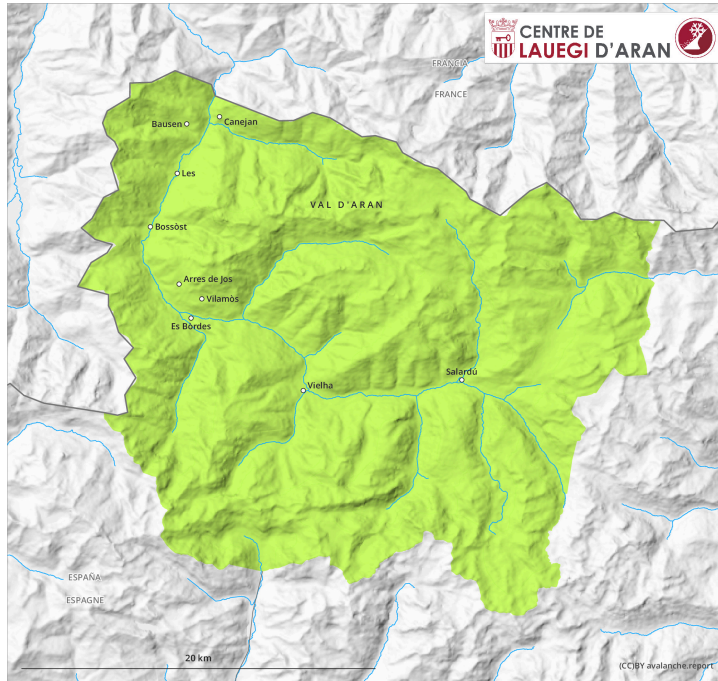
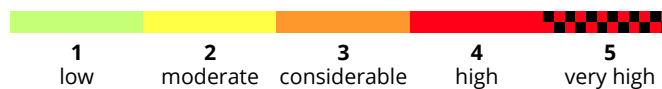
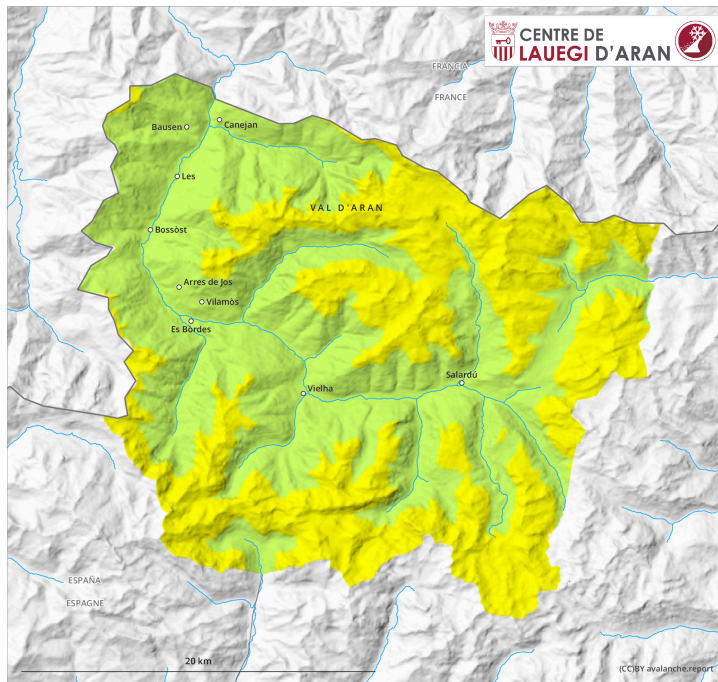


AM



PM



Danger Level 2 - Moderate

AM:



Tendency: Decreasing avalanche danger

on Saturday 13 04 2024



Wind slab



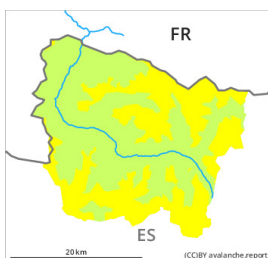
2400m

Snowpack stability: **fair**

Frequency: **few**

Avalanche size: **small**

PM:



Tendency: Decreasing avalanche danger

on Saturday 13 04 2024



Wet snow



2000m

Snowpack stability: **very poor**

Frequency: **some**

Avalanche size: **small**



Wind slab



2400m

Snowpack stability: **fair**

Frequency: **few**

Avalanche size: **small**

Moist loose snow avalanches are likely to occur from the middle of the day. Old wind slabs at elevated altitudes.

A clear night will be followed in the early morning by favourable avalanche conditions mostly, but the avalanche danger will increase later. On very steep sunny slopes small moist loose snow avalanches are to be expected above approximately 2000 m.

In addition the clearly visible wind slabs of Monday are prone to triggering in very isolated cases still. These can in some cases be released by people, but they will be small in most cases. The avalanche prone locations are to be found in particular on shady slopes above approximately 2400 m.

Restraint should be exercised because avalanches can sweep people along and give rise to falls.

Snowpack

The wind slabs are located on a brown crust due to the effect of Saharan dust. On shady slopes above approximately 2000 m there are 20 to 70 cm of snow, and even more in some localities. On steep sunny slopes only a little snow is lying.

Tendency

Saturday: The danger of moist and wet avalanches will not decrease for the time being. The danger of dry slab avalanches will decrease gradually.