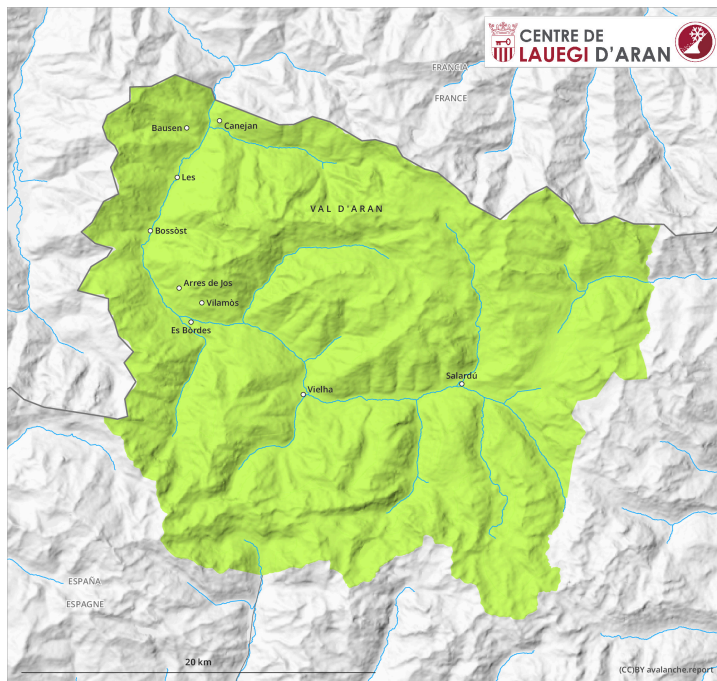
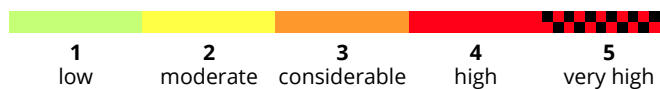
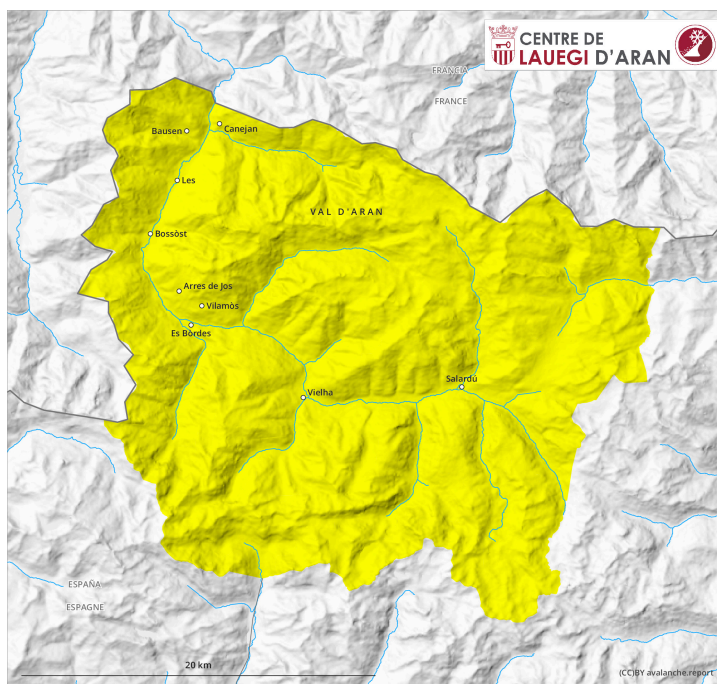


## AM



## PM



## Danger Level 2 - Moderate

AM:



**Tendency: Increasing avalanche danger**  
on Monday 15 04 2024



PM:



**Tendency: Increasing avalanche danger**  
on Monday 15 04 2024



Wet snow



Snowpack stability: **very poor**

Frequency: **some**

Avalanche size: **small**

Moist loose snow avalanches are likely to occur from the middle of the day.

A clear night will be followed in the early morning by favourable avalanche conditions, but the avalanche danger will increase later. On very steep sunny slopes small moist loose snow avalanches are to be expected above approximately 2000 m. Also on shady slopes small and, in isolated cases, medium-sized moist avalanches are possible below approximately 2300 m.

Apart from the danger of being buried, restraint should be exercised in particular in view of the danger of avalanches sweeping people along and giving rise to falls.

### Snowpack

The surface of the snow cover is brown due to the effect of the Sahara dust. The surface of the snowpack will freeze to form a strong crust only at high altitudes and will soften quickly. On shady slopes above approximately 2000 m there are 10 to 50 cm of snow, and even more in some localities. On steep sunny slopes only a little snow is lying.

### Tendency

Monday: The danger of moist and wet avalanches will already increase in the early morning.