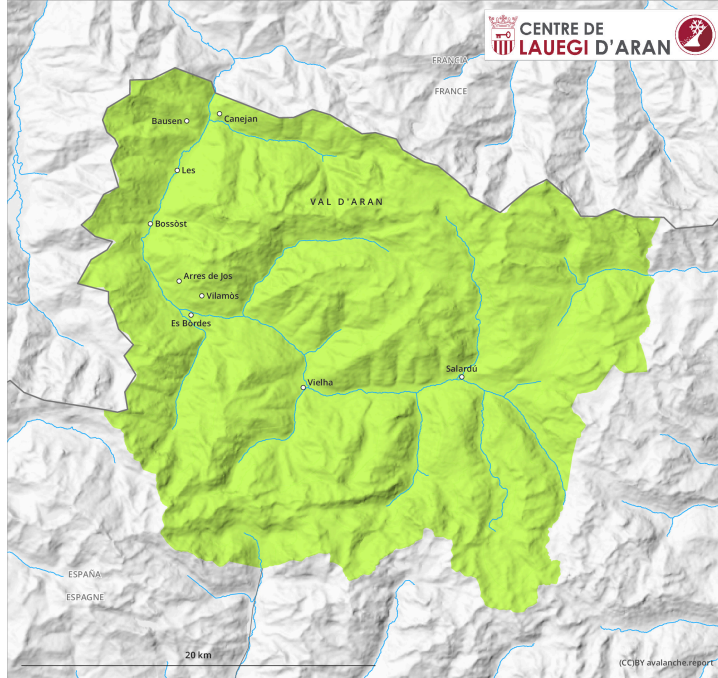
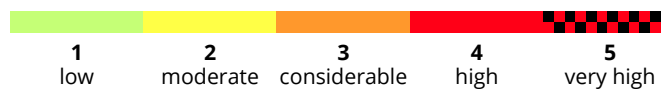
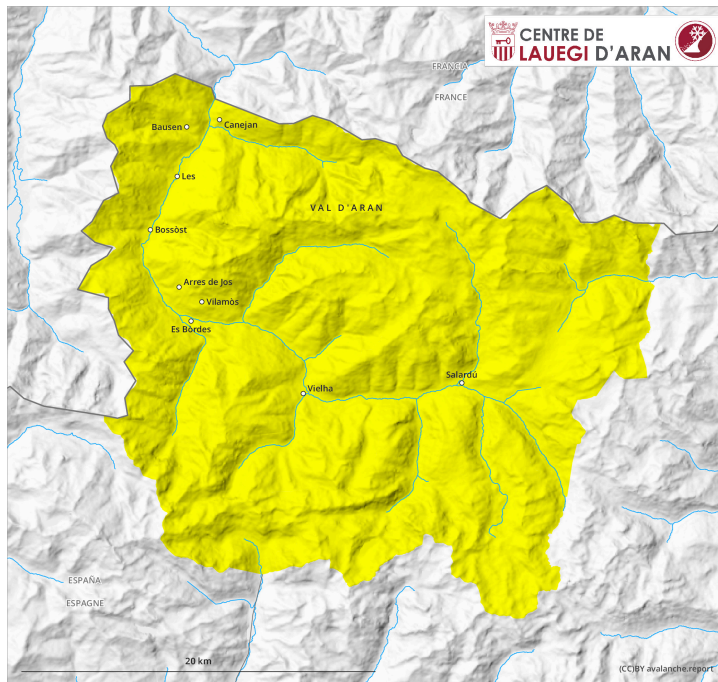


earlier

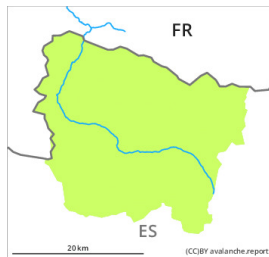


later

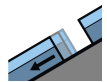


Danger Level 2 - Moderate

earlier



Tendency: Constant avalanche danger
on Saturday 28 December 2024



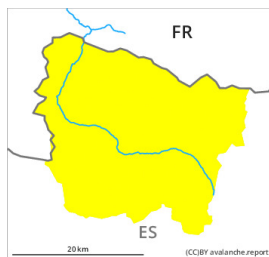
Gliding snow



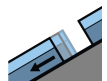
Frequency: **few**

Avalanche size: **medium**

later



Tendency: Constant avalanche danger
on Saturday 28 December 2024



Gliding snow



Frequency: **some**

Avalanche size: **medium**



Wet snow



Snowpack stability: **very poor**

Frequency: **some**

Avalanche size: **small**

Gliding avalanches and moist snow slides during the day require caution.

As the temperature drops a favourable early-morning avalanche situation will be encountered over a wide area. As a consequence of warming during the day and solar radiation more moist snow slides and avalanches are possible as the day progresses, but they will be mostly small. The avalanche prone locations are to be found on very steep sunny slopes in all altitude zones. Moist avalanches can be released by people or triggered naturally. In particular, however, small and, in isolated cases, medium-sized gliding avalanches are to be expected. They can also be released in the morning. The avalanche prone locations are to be found on very steep grassy slopes.

Apart from the danger of being buried, restraint should be exercised as well in view of the danger of avalanches sweeping people along and giving rise to falls. In particular shady slopes: There is a danger of falling on the hard snow surface. Caution is to be exercised in areas with glide cracks.

Snowpack

In particular sunny slopes: The surface of the snowpack will freeze to form a strong crust and will soften during the day. Shady slopes: The upper section of the snowpack is hard and its surface has a crust that is strong in many cases. Towards its base, the snowpack is dry.

At intermediate altitudes there are 50 to 100 cm of snow. Above the tree line snow depths vary greatly,

depending on the influence of the wind.

Tendency

Saturday: The danger of gliding avalanches and moist snow slides will not decrease for the time being.