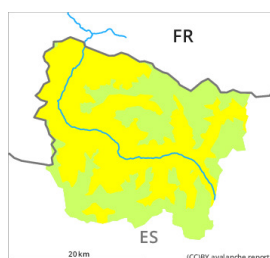
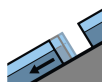


## Danger Level 2 - Moderate



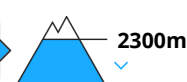
**Tendency: Decreasing avalanche danger**  
on Saturday 25 12 2021



Gliding snow



Wet snow



Gliding avalanches and moist snow slides are to be expected already in the early morning.

As a consequence of heat and rain an unfavourable avalanche situation will be encountered in some localities. More gliding avalanches and moist snow slides are possible at any time, even medium-sized ones. The avalanche prone locations are to be found in particular on west, north and east facing slopes at low and intermediate altitudes and on very steep grassy slopes below approximately 2500 m. In addition mostly shallow wind slabs will form in particular adjacent to ridgelines and in gullies and bowls and at elevated altitudes during the night.

The conditions are sometimes unfavourable for backcountry touring in steep terrain. Areas with glide cracks are to be avoided.

### Snowpack

Some rain will fall until the early morning. Outgoing longwave radiation during the night will be severely restricted. These weather conditions will give rise to increasing moistening of the snowpack in particular on shady slopes at low and intermediate altitudes. The sometimes strong wind will transport only a little snow.

A lot of snow is lying for the time of year in all altitude zones.

### Tendency

**Christmas Day:** Gradual decrease in danger of gliding avalanches and moist snow slides as the temperature drops.

**Boxing Day:** Slight increase in danger of dry avalanches as a consequence of new snow and wind.