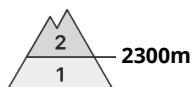
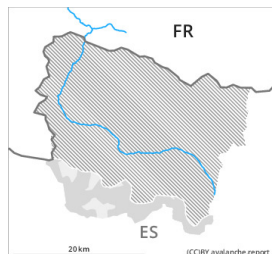




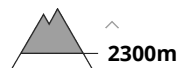
## Danger Level 2 - Moderate



**Tendency: Constant avalanche danger** →  
on Saturday 26 03 2022



Wind-drifted  
snow



Wet snow



Wind slabs at high altitude. Moist snow slides are possible as the day progresses.

As a consequence of a moderate to strong wind from southeasterly directions, sometimes avalanche prone wind slabs formed in the last few days adjacent to ridgelines and in gullies and bowls. They are mostly small but can in some cases be released easily. The avalanche prone locations are to be found in particular on very steep north and west facing slopes above approximately 2300 m.

As the moisture increases moist snow slides are possible as the day progresses. They can be released by people, but they will be small in most cases. Individual gliding avalanches can also occur. The avalanche prone locations for moist avalanches are to be found in particular on very steep sunny slopes and on extremely steep grassy slopes.

### Snowpack

The new snow and wind slabs of the last few days are lying on a crust in all aspects. This snow is bonding only slowly with the old snowpack in particular on very steep, little used shady slopes and at high altitude.

Sunny slopes: The surface of the snowpack will cool hardly at all during the overcast night and will already soften in the late morning. Shady slopes and low and intermediate altitudes: The surface of the snowpack will freeze to form a strong crust only at high altitudes and will soften during the day.

### Tendency

The danger of dry and moist avalanches will persist.



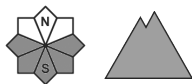
## Danger Level 1 - Low



**Tendency: Constant avalanche danger** →  
on Saturday 26 03 2022



Wet snow



In all altitude zones a generally favourable avalanche situation will prevail.

As the moisture increases moist snow slides are possible as the day progresses. They can be released by people, but they will be small in most cases. Individual gliding avalanches can also occur. The avalanche prone locations for moist avalanches are to be found in particular on very steep sunny slopes and on extremely steep grassy slopes.

## Snowpack

Sunny slopes as well as low altitudes: The surface of the snowpack will cool hardly at all during the overcast night and will already soften in the late morning.

Shady slopes above approximately 2000 m: The surface of the snowpack will freeze to form a strong crust only at high altitudes and will soften during the day.

Above approximately 2000 m there are 100 to 200 cm of snow. At high altitudes and in high Alpine regions snow depths vary greatly, depending on the influence of the wind.

## Tendency

The conditions remain spring-like. The danger of moist avalanches will already be elevated in the early morning.