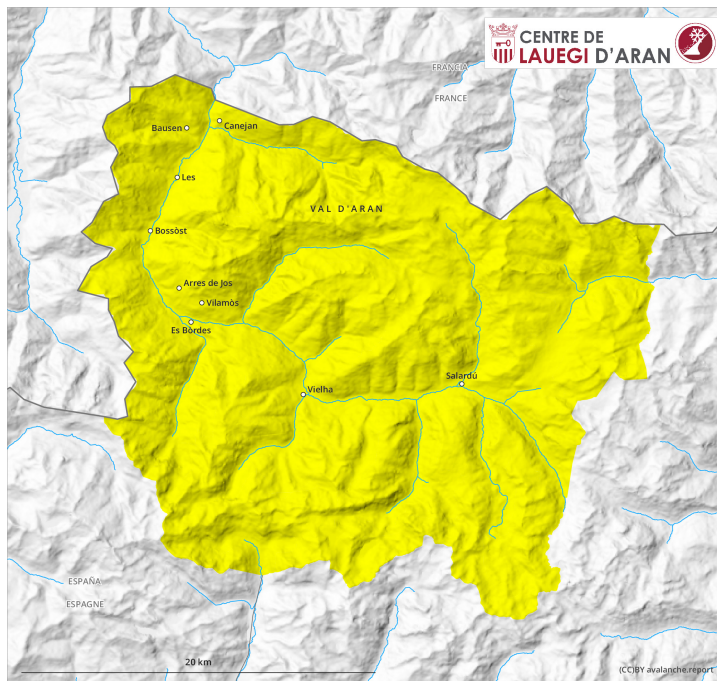
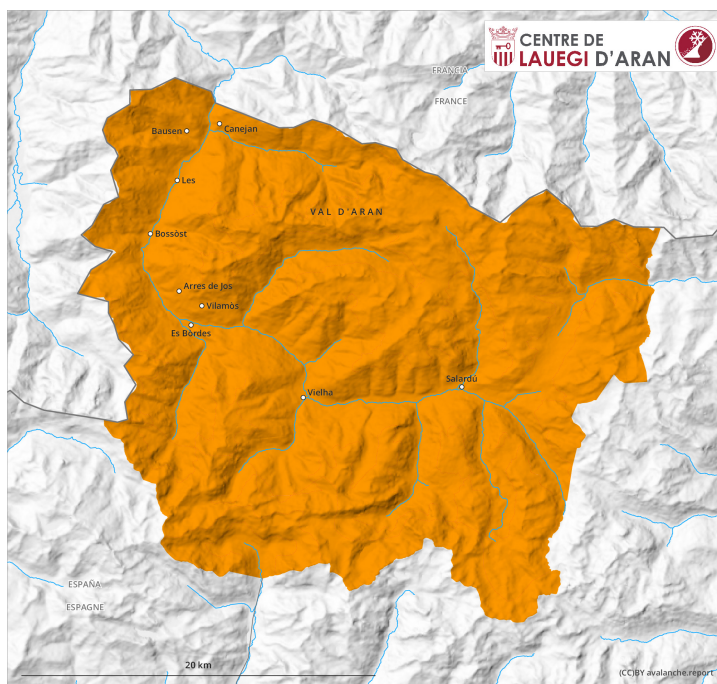
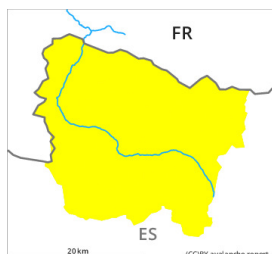


AM

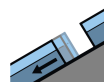


PM



Danger Level 3 - Considerable**AM:****Tendency: Constant avalanche danger** →

on Saturday 16 04 2022



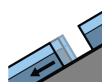
Gliding snow



Wet snow

**PM:****Tendency: Constant avalanche danger** →

on Saturday 16 04 2022



Gliding snow



Wet snow

**Wet and gliding snow represent the main danger.**

As a consequence of warming during the day and solar radiation more wet and gliding avalanches are to be expected as the day progresses.

The avalanche prone locations for gliding avalanches are to be found on very steep east, south and west facing slopes in all altitude zones and on shady slopes below approximately 2400 m. In isolated cases the avalanches in these locations are large.

In addition from the early morning in all aspects, numerous small and, in isolated cases, medium-sized wet snow slides and avalanches are to be expected. Moist avalanches can be released by people or triggered naturally.

Snowpack

The conditions are spring-like.

The surface of the snowpack will cool hardly at all during the overcast night and will already soften in the late morning.

The meteorological conditions caused a substantial weakening of the snowpack in all aspects. Naturally triggered avalanches confirm a dangerous avalanche situation.

Tendency

Hardly any decrease in danger of moist avalanches until the temperature drops.