



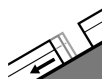
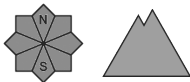
## Danger Level 2 - Moderate



**Tendency: Increasing avalanche danger**  
on Thursday 28 04 2022



Wet snow



Gliding snow



As a consequence of heat and rain an unfavourable avalanche situation will be encountered in some localities. Moist snow slides and avalanches require caution.

As the day progresses more frequent small and medium-sized moist snow slides and avalanches are possible. The avalanche prone locations are to be found in all aspects and generally at intermediate and high altitudes. Snow sport participants can release avalanches with increasing likelihood. Avalanches can in some cases be triggered in the old snowpack and reach medium size.

The wind slabs of the weekend can be released by a single winter sport participant in isolated cases in particular on extreme shady slopes and at elevated altitudes. In very isolated cases the avalanches in these locations are medium-sized.

In addition a latent danger of gliding avalanches exists. The current avalanche situation calls for meticulous route selection. Backcountry tours should be started and concluded early.

### Snowpack

The new snow of the weekend has settled to a large extent in all aspects. Outgoing longwave radiation during the night will be reduced. Some rain will fall until Thursday. The surface of the snowpack will freeze very little and will soften quickly. On shady slopes at intermediate and high altitudes there is still a very large amount of snow.

The Avalanche Warning Service currently has only a small amount of information that has been collected in the high Alpine regions, so that the avalanche danger should be investigated especially thoroughly in the relevant locality.

### Tendency

Thursday: Hardly any decrease in danger of moist avalanches until the temperature drops.