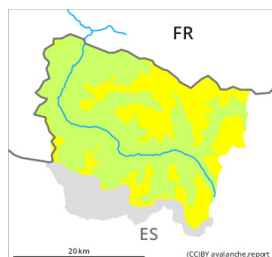


Danger Level 2 - Moderate



Tendency: Constant avalanche danger →
on Monday 12 12 2022



Wind slab



Snowpack stability: **poor**

Frequency: **some**

Avalanche size: **small**

Fresh wind slabs require caution.

The small wind slabs of the last three days can be released by a single winter sport participant in isolated cases. The avalanche prone locations are to be found in particular adjacent to ridgelines and in gullies and bowls in all aspects above approximately 2100 m. The avalanches are only small.

Apart from the danger of being buried, restraint should be exercised as well in view of the danger of avalanches sweeping people along and giving rise to falls.

Snowpack

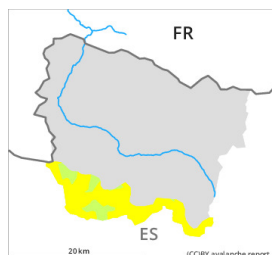
Less snow than expected fell during the night. In all regions 2 cm of snow has fallen. In the past few hours the wind was light.

At intermediate altitudes there are 30 to 50 cm of snow, and even more in some localities. At high altitudes and in high Alpine regions snow depths vary greatly, depending on the influence of the wind.

Tendency

Monday: Slight increase in avalanche danger as a consequence of new snow and strong wind.

Danger Level 2 - Moderate



Tendency: Constant avalanche danger →

on Monday 12 12 2022



Wind slab



Snowpack stability: **poor**

Frequency: **few**

Avalanche size: **medium**

Old wind slabs represent the main danger.

The sometimes avalanche-prone wind slabs of Friday can be released by a single winter sport participant in some cases in particular on wind-protected shady slopes above approximately 2200 m. In isolated cases the avalanches in these locations are medium-sized. The avalanche prone locations are sometimes covered with new snow and are therefore difficult to recognise.

Apart from the danger of being buried, restraint should be exercised as well in view of the danger of avalanches sweeping people along and giving rise to falls.

Snowpack

The wind slabs are lying on weak layers on wind-protected shady slopes above approximately 2200 m.

At intermediate altitudes there are 30 to 50 cm of snow, and even more in some localities. At high altitudes and in high Alpine regions snow depths vary greatly, depending on the influence of the wind.

Tendency

Monday: Slight increase in avalanche danger as a consequence of new snow and strong wind.