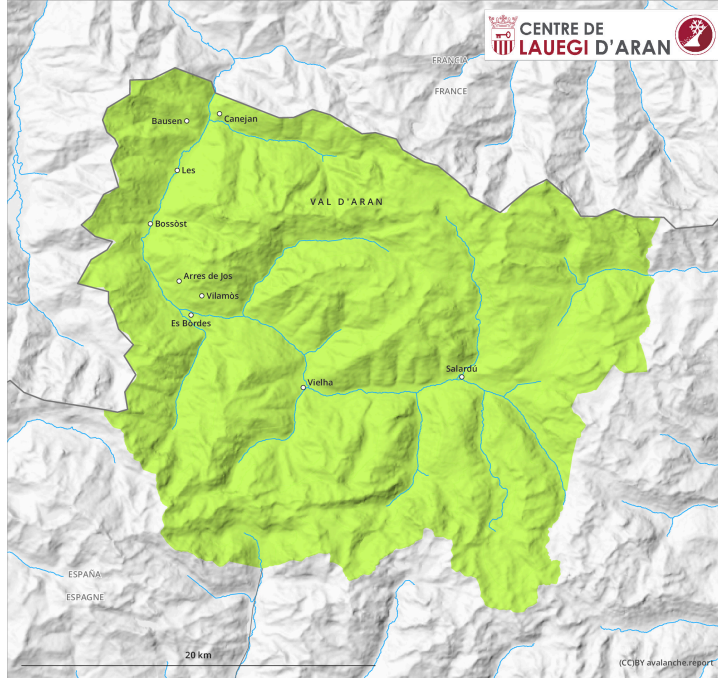
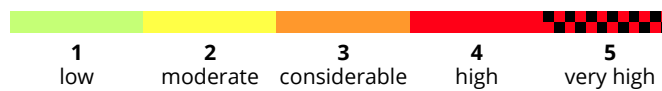
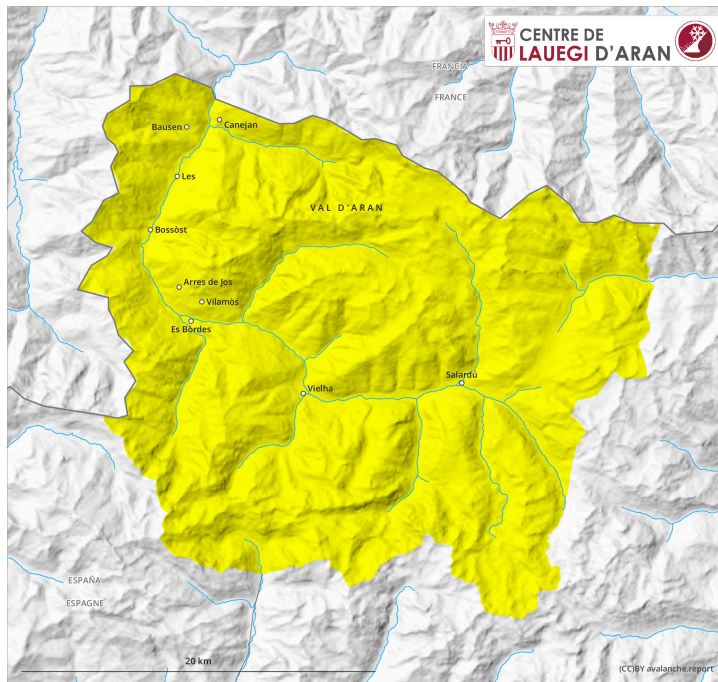


AM



PM



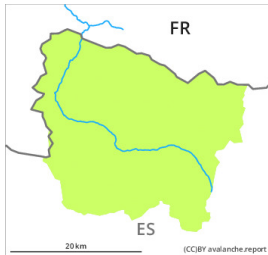
Danger Level 2 - Moderate

AM:

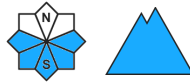


Tendency: Increasing avalanche danger

on Saturday 04 02 2023



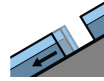
Wet snow



Snowpack stability: **fair**

Frequency: **few**

Avalanche size: **small**



Gliding snow



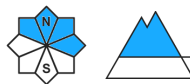
Snowpack stability: **fair**

Frequency: **few**

Avalanche size: **small**



Wind slab



2300m

Snowpack stability: **fair**

Frequency: **few**

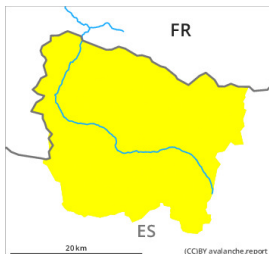
Avalanche size: **medium**

PM:

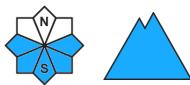


Tendency: Increasing avalanche danger

on Saturday 04 02 2023



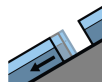
Wet snow



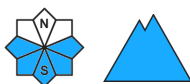
Snowpack stability: **very poor**

Frequency: **some**

Avalanche size: **small**



Gliding snow



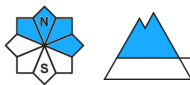
Snowpack stability: **poor**

Frequency: **some**

Avalanche size: **medium**



Wind slab



2300m

Snowpack stability: **fair**

Frequency: **few**

Avalanche size: **medium**

Wet and gliding snow represent the main danger. Dry avalanches at elevated altitudes.

As a consequence of warming during the day and solar radiation more frequent small and, in isolated cases, medium-sized moist loose snow avalanches are to be expected. The avalanche prone locations are to be found in particular on very steep sunny slopes. On very steep grassy slopes more gliding avalanches are possible at any time, even medium-sized ones.

The old wind slabs can still be released in some cases especially on very steep north and east facing slopes and generally at elevated altitudes. In very isolated cases the avalanches in these locations are medium-sized but can be released also by a single winter sport participant. The avalanche prone locations are to be

found especially in gullies and bowls, and behind abrupt changes in the terrain and adjacent to ridgelines. Weak layers in the old snowpack can still be released in very isolated cases on little-used, rather lightly snow-covered shady slopes. Caution is to be exercised at transitions from a shallow to a deep snowpack, when entering gullies and bowls for example in extremely steep terrain.

Also extremely steep shady slopes: An appreciable danger of dry snow slides exists.

The current avalanche situation calls for meticulous route selection. Backcountry tours and off-piste skiing should be started very early and concluded timely.

Snowpack

The wind slabs of recent weeks have bonded quite well with the old snowpack. Field observations indicate a generally favourable avalanche situation on shady slopes. Sunshine and high temperatures will give rise as the day progresses to increasing moistening of the snowpack on steep sunny slopes. Single backcountry tourers or freeriders can release avalanches with increasing likelihood.

Above the tree line there are 50 to 100 cm of snow, and even more in some localities. At intermediate and high altitudes snow depths vary greatly, depending on the influence of the wind.

Tendency

On Saturday it will be exceptionally warm. The danger of moist avalanches will already increase in the early morning. The danger of dry avalanches will persist.