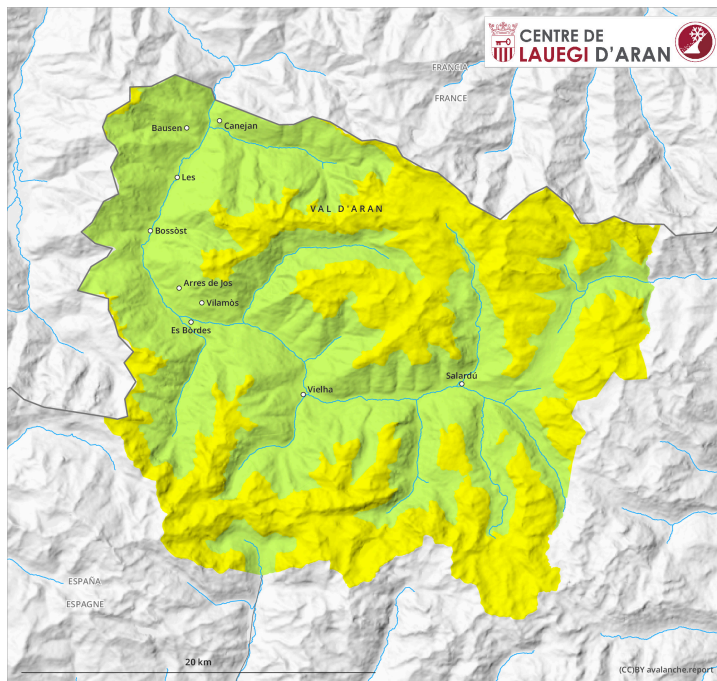
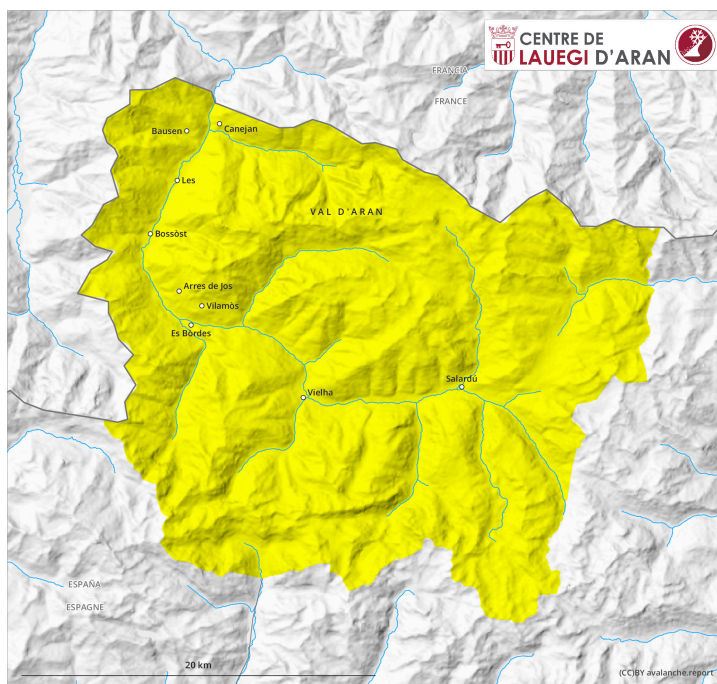


AM

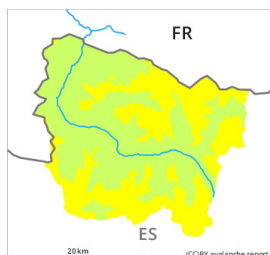


PM



Danger Level 2 - Moderate

AM:



Tendency: Constant avalanche danger →
on Thursday 06 04 2023



Wind slab

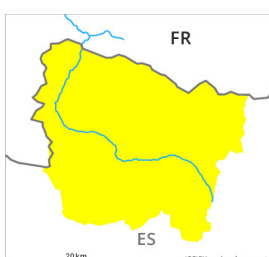


Snowpack stability: **fair**

Frequency: **some**

Avalanche size: **medium**

PM:



Tendency: Constant avalanche danger →
on Thursday 06 04 2023



Wet snow



Snowpack stability: **poor**

Frequency: **some**

Avalanche size: **medium**



Wind slab



Snowpack stability: **fair**

Frequency: **some**

Avalanche size: **medium**

Old wind slabs at high altitude. Moist snow slides during the day and gliding avalanches are possible.

The sometimes deep wind slabs of the weekend can still be released in some cases and generally at elevated altitudes. Sometimes the avalanches are medium-sized. The avalanche prone locations are to be found adjacent to ridgelines and in shady places that are protected from the wind. At elevated altitudes the avalanche prone locations are more prevalent and larger.

As a consequence of warming during the day and solar radiation more moist snow slides are possible as the day progresses, but they will be mostly small. Individual gliding avalanches can also occur. In isolated cases these are medium-sized.

Backcountry touring and other off-piste activities call for meticulous route selection. Apart from the danger of being buried, restraint should be exercised as well in view of the danger of avalanches sweeping people along and giving rise to falls.

Snowpack

The snowpack will be in most cases stable. The fresh snow of the weekend and in particular the wind slabs have bonded quite well with the old snowpack in all aspects. Sunshine and high temperatures will give rise on Wednesday to increasing moistening of the snowpack in particular on very steep sunny slopes.

On shady slopes at intermediate and high altitudes there are 20 to 60 cm of snow, and even more in some

localities. At elevated altitudes snow depths vary greatly, depending on the influence of the wind. At low altitude from a snow sport perspective, in most cases insufficient snow is lying.

Tendency

Thursday: Further decrease in danger of dry avalanches on wind-loaded slopes. Early morning: Temporary decrease in danger of moist avalanches as the temperature drops. As a consequence of warming during the day and solar radiation the avalanche prone locations will become more prevalent as the day progresses.