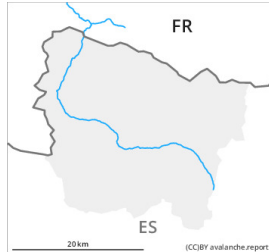


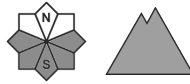
## Danger Level 1 - Low



**Tendency: Constant avalanche danger** →  
on Monday 27 11 2023



Wet snow



Snowpack stability: **very poor**

Frequency: **few**

Avalanche size: **small**



Wind slab



Snowpack stability: **poor**

Frequency: **few**

Avalanche size: **small**

### In all aspects a low avalanche danger will prevail.

As the penetration by moisture increases more small wet and gliding avalanches are possible. Explanation: "these" may only stand for "these avalanches" can occur easily or triggered naturally. The avalanche prone locations are to be found in particular on extremely steep sunny slopes and on very steep grassy slopes. The wind slabs can be released in isolated cases on rocky north and east facing slopes and generally at high altitude. These can in some cases be released by people, but they will be small in most cases.

The Avalanche Warning Service currently has only a small amount of information about the snowpack, so that the avalanche danger should be investigated especially thoroughly in the relevant locality.

### Snowpack

Above approximately 1700 m there are 20 to 30 cm of snow, and even more in some localities. Snow depths vary greatly at intermediate and high altitudes, depending on the influence of the wind. At low altitude from a snow sport perspective, insufficient snow is lying.

### Tendency

The avalanche danger will persist.