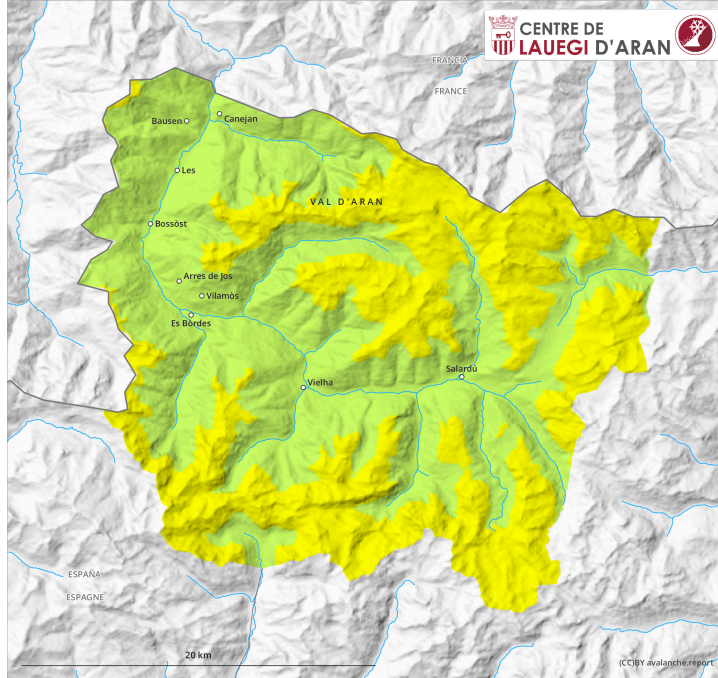
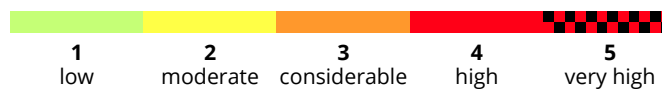
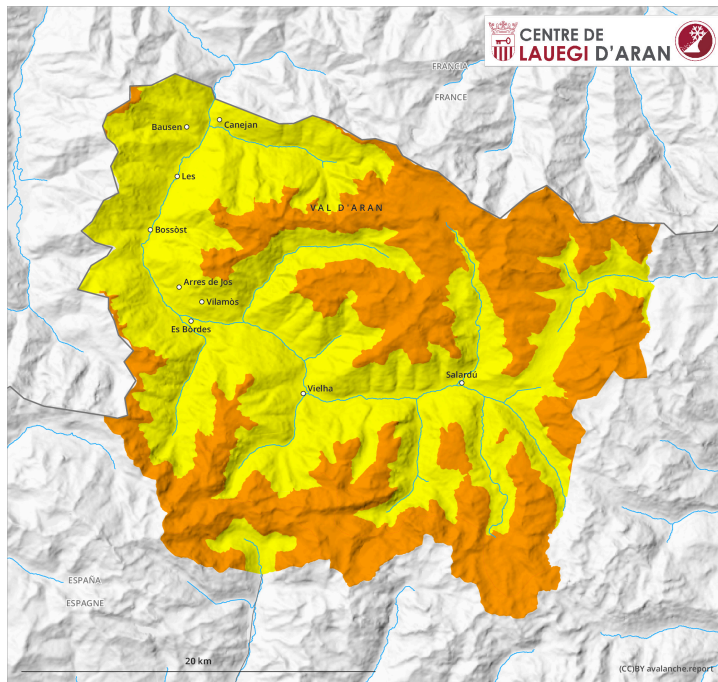


AM

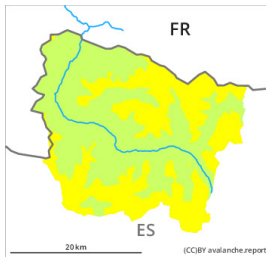


PM



Danger Level 3 - Considerable

AM:



Tendency: Constant avalanche danger →
on Saturday 09 12 2023

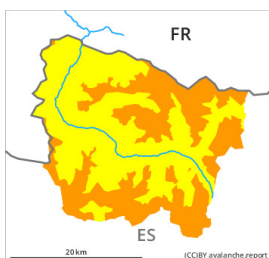


New snow



Snowpack stability: **poor**
Frequency: **some**
Avalanche size: **small**

PM:



Tendency: Constant avalanche danger →
on Saturday 09 12 2023



Wind slab



Snowpack stability: **very poor**
Frequency: **some**
Avalanche size: **medium**



New snow



Snowpack stability: **very poor**
Frequency: **some**
Avalanche size: **small**

Danger level 3 (considerable) will be reached in the afternoon on north, east and south facing slopes.

20 cm of snow, and even more in some localities, will fall until late in the night above approximately 2000 m. This snow can be released easily, or, in isolated cases, naturally in all aspects and at intermediate and high altitudes. The avalanches in these locations are rather small.

As a consequence of a gathering strong northwesterly wind, precarious wind slabs will form in the course of the day in particular on north, east and south facing slopes. The avalanches can be released very easily and reach medium size.

The avalanche prone locations are barely recognisable because of the poor visibility. Ski touring and other off-piste activities, including snowshoe hiking, call for caution.

Snowpack

The fresh snow and the wind slabs will be deposited on the unfavourable surface of an old snowpack in particular on north and east facing slopes above approximately 2000 m.

Above approximately 2000 m there are 20 to 30 cm of snow, and even more in some localities. Snow depths vary greatly, depending on the influence of the wind. At low altitude from a snow sport perspective, insufficient snow is lying.

Tendency

On Saturday as a consequence of the rain there will be a rapid increase in the danger of moist avalanches to level 3 (considerable).