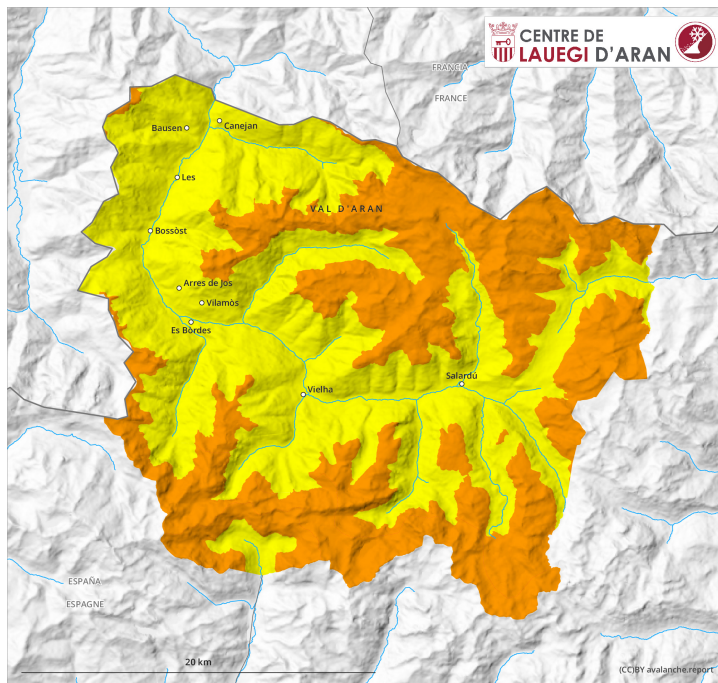
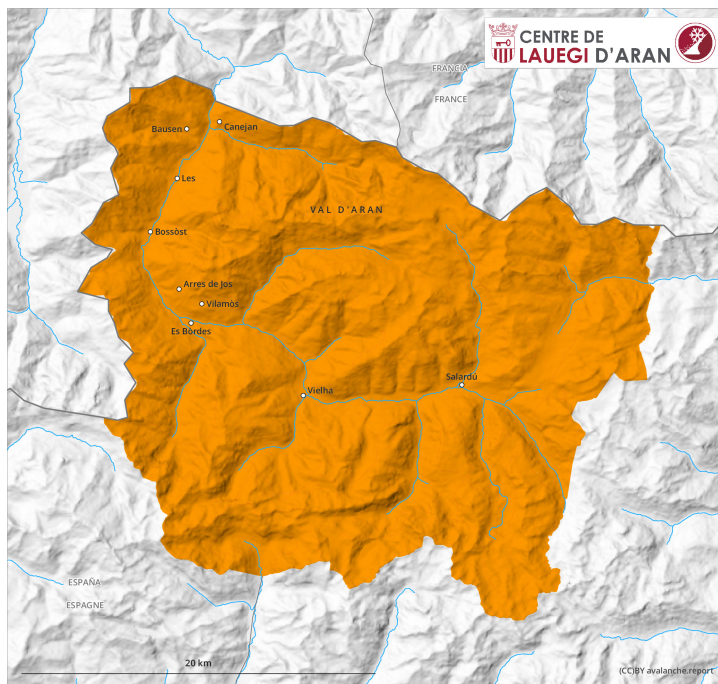




**earlier**

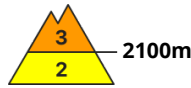


**later**

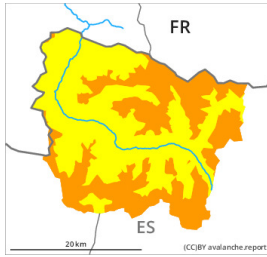


## Danger Level 3 - Considerable

earlier



**Tendency: Constant avalanche danger** →  
on Monday 6 April 2026



Persistent weak layer



Snowpack stability: **very poor**

Frequency: **some**

Avalanche size: **large**



Wind slab



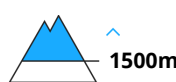
Snowpack stability: **very poor**

Frequency: **some**

Avalanche size: **medium**



Wet snow



Snowpack stability: **poor**

Frequency: **few**

Avalanche size: **medium**

later



**Tendency: Constant avalanche danger** →  
on Monday 6 April 2026



Persistent weak layer



Snowpack stability: **very poor**

Frequency: **some**

Avalanche size: **large**



Wind slab



Snowpack stability: **very poor**

Frequency: **some**

Avalanche size: **medium**



Wet snow



Snowpack stability: **very poor**

Frequency: **many**

Avalanche size: **medium**

Weakly bonded old snow and wet snow are to be assessed with care and prudence.

Weak layers in the upper part of the snowpack can be released in some places by people on shady slopes. The avalanche prone locations are to be found especially adjacent to ridgelines and in gullies and bowls. These can in some cases reach large size. The hard wind slabs can be released easily by a single winter sport participant in particular on steep shady slopes at high altitude. Sometimes Explanation: "these" may



only stand for "these avalanches" are medium-sized.

Sunny slopes: As a consequence of warming during the day and solar radiation more frequent moist snow slides and avalanches are to be expected from the early morning, even medium-sized ones. Gliding avalanches can also occur at any time.

The conditions are treacherous for ski touring, freeriding and snowshoe hiking.

## Snowpack

The weather will be sunny. The northerly wind has transported the new snow significantly.

The fresh and somewhat older wind slabs are lying on soft layers.

The solar radiation will give rise as the day progresses to rapid moistening of the snowpack.

At intermediate altitudes there are 120 to 240 cm of snow, and even more in some localities. Snow depths vary greatly at high altitudes and in high Alpine regions, depending on the influence of the wind.

## Tendency

Easter Monday: Slight increase in danger of moist avalanches as a consequence of warming during the day and solar radiation.