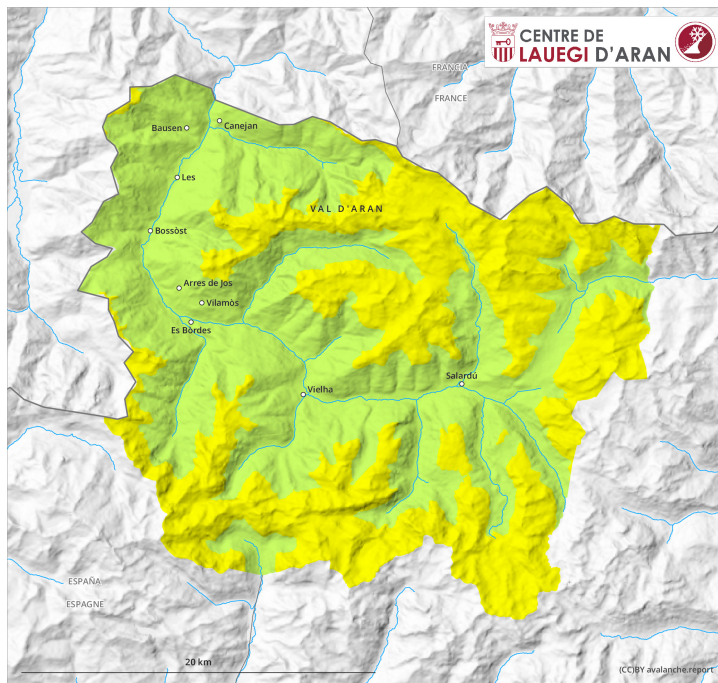
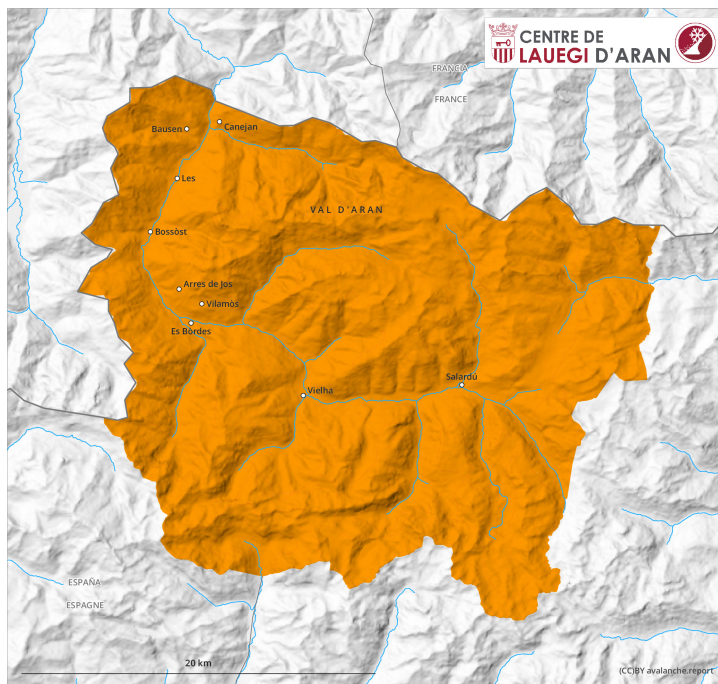




earlier

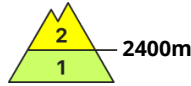
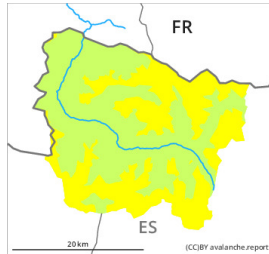


later



## Danger Level 3 - Considerable

earlier



**Tendency: Constant avalanche danger** →  
on Thursday 9 April 2026

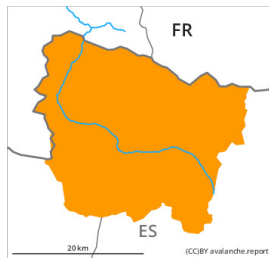


Snowpack stability: **poor**

Frequency: **few**

Avalanche size: **large**

later



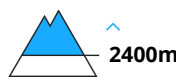
**Tendency: Constant avalanche danger** →  
on Thursday 9 April 2026



Snowpack stability: **very poor**

Frequency: **some**

Avalanche size: **medium**



Snowpack stability: **poor**

Frequency: **few**

Avalanche size: **large**

Weakly bonded old snow at elevated altitudes. Wet and gliding avalanches as the day progresses.

Weak layers in the old snowpack can still be released in some places on very steep shady slopes. The avalanche prone locations are to be found in particular at the base of rock walls and behind abrupt changes in the terrain, and adjacent to ridgelines and in gullies and bowls. They can in isolated cases reach quite a large size. Sunny slopes: As a consequence of warming during the day and solar radiation more moist avalanches are to be expected as the day progresses. Also shady slopes low and intermediate altitudes: As the penetration by moisture increases moist slab avalanches are possible, even medium-sized ones.

Backcountry touring calls for meticulous route selection. Backcountry tours should be concluded by around midday.

### Snowpack

In particular high altitudes wind-protected shady slopes: Distinct weak layers exist in the top section of the snowpack.



On Wednesday it will be warm. Sunshine and high temperatures will give rise as the day progresses to increasing moistening of the snowpack.

At intermediate and high altitudes there is still a very large amount of snow. At high altitude snow depths vary greatly, depending on the influence of the wind.

## Tendency

Thursday: The conditions remain spring-like.